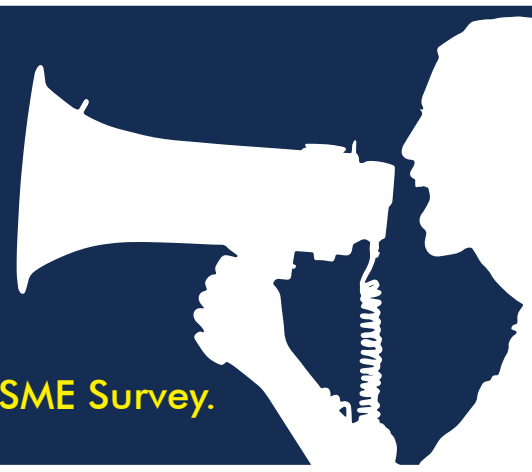


Attention **MSME** owners in Eswatini!

Please participate in the **2023 Blended FinScope MSME Survey**.



Survey Partners:

CFI, Ministry of Commerce, ESEPARC, and CSO are joining forces for a global initiative.



Phase Two Goal:

Help shape growth!

We aim for **3,500 MSME** interviews in Eswatini.



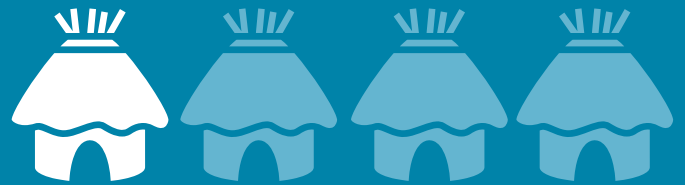
Phase One Insights:

From **45,628** visits, **24.6%** showed active business ownership.



1 in 4 structures

in Eswatini houses an enterprising **business owner**.



Selected Participants:



If selected, call **ESEPARC** at **7618 7369/2404 9077** to contribute to MSME transformation. Your crucial role is valued.

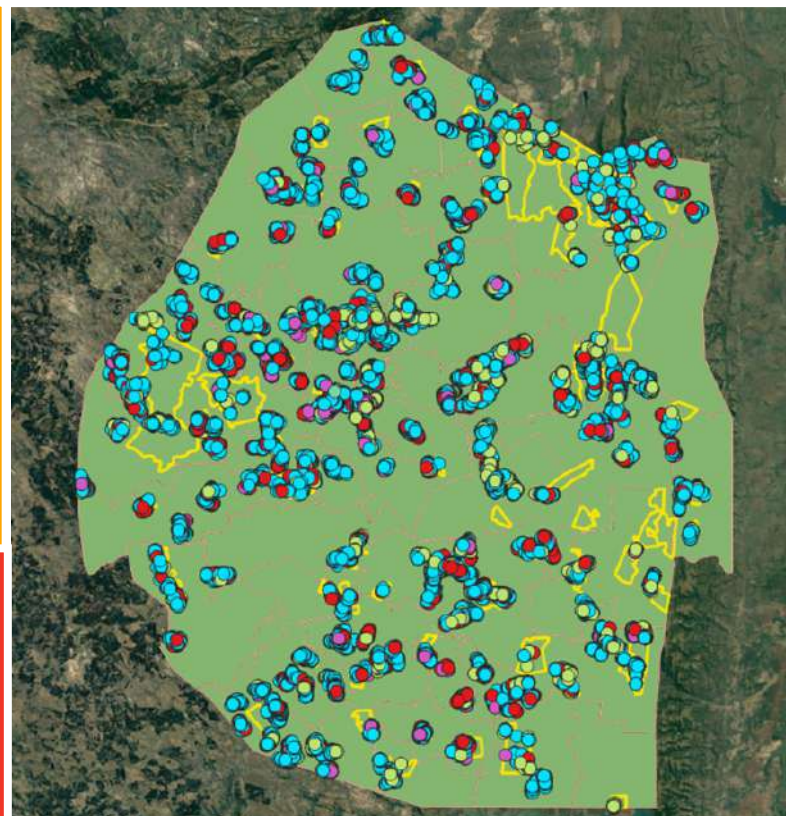
More information

www.separc.co.sz
+268 7618 7369
+268 3402 9279

Express yourself confidently and be part of our initiative.

Catalyst for Change:

Be a catalyst for change!
Participate and contribute to transforming MSMEs into thriving entities.



Legend;

Turquoise/Blue = Household without business (HH),
Red = Household with Business (HB),
Green = Not HH nor Business, Purple = Business Unit (BU)